

UNIVERSITY OF NEBRASKA - LINCOLN WOMEN'S CLUB

Promote friendship | Strengthen bonds of common interest | Provide service to UNL



- **September TBA**
Fall Welcome
- **October 16th**
Fall Tour
- **November 13th**
Fall Brunch

[Read All About It](#)

2 - Fall Events

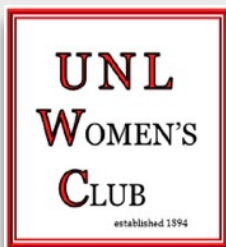
3 - Officers & Chairs

4 - Fundraising and Scholarships

5 & 6 - Interest Groups

7 - Caring for One Another

8 - Photographs



Message from UNLWC 2024-25 President, Cheryl Tzrupek

Dear UNLWC Members,

Welcome back to the University of Nebraska Women's Club as we celebrate 130 years of friendship, common bonds, shared interests and our commitment to serving the UNL community. I am particularly proud of the support that we provide through scholarships for our next generation of leaders.

Serving as the President of this vibrant organization is an honor. I am fortunate to have an excellent group of women who have agreed to serve with me on this year's Board of Directors. As you read this newsletter, you'll see just a small portion of all they do.

I moved to Lincoln with my husband four years ago to be closer to my parents in York, Nebraska. Past President Karen Buckley recruited me to join UNLWC and I discovered a wonderful group of new friends. If you're a newer member or a continuing member, please consider the many opportunities to meet people and get involved. A wide variety of Interest Groups are available to explore. More information can be found on pages 5-6.

Our Fall Welcome is still being organized. Please watch your emails for updates. Do consider joining us for a trip to Nebraska City for our Fall Tour in October. I'd also like you to mark your calendar for the Fall Brunch in November. Details of both can be found later in this newsletter.

I look forward to a tremendous 130th anniversary year!

Cheryl Tzrupek

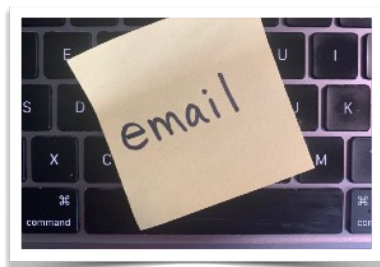




Fall Welcome Luncheon

Our annual Fall Welcome Luncheon is in the planning stages. Details will be forthcoming.

This is a members-only event. Members please check your email for an invitation and RSVP as requested.



Fall Brunch Wednesday, November 13th

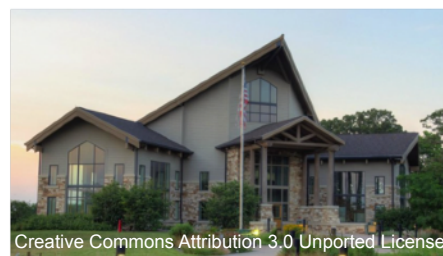
Our November event will be held at The Landing on Faulkner Drive - Williamsburg Room. We will gather at 10:30 a.m. with brunch served at 11:00 a.m. Entertainment will follow.

Additional details and registration information will be sent via email once the event is finalized.

Fall Tour Wednesday, October 16th

A special day in Nebraska City has been planned for your enjoyment.

We will visit Arbor Lodge State Historical Park, explore the 52-room Arbor Lodge mansion, and hear a presentation highlighting the women associated with the mansion. Following the tour and presentation, we will be treated to an authentic tea that will be substantial for lunch.



Following the tea, we will travel to the Missouri River Basin Lewis & Clark Interpretative Visitor Center, located just outside Nebraska City, sitting up above the Missouri River on a scenic 79-acre wooded bluff. We will view an introductory movie and a

park ranger will give a presentation about life on the plains at the time of Lewis and Clark's historic expedition.

Please contact any of the three Co-Chairs if you have questions: Julie Albrecht, Cheryl Alberts, or Cathi Haisch.

Watch your email for additional information and a registration form.



UNLWC Fundraising



This year, thanks to a generous donation from Nancy Weller, we are delighted to have a quilt which will be raffled at our spring luncheon. The quilt pattern is Garden Fair by Blackbird Designs. It was pieced by Dorothy Vinson, Nancy's mother. The quilt is 86 inches square, perfect for a queen sized bed.

The design was inspired by the Polk Garden Club of Polk, NE. The women met for many years starting in 1957, and worked to beautify their community through gardens and flowers. This club, like ours, included friendship, support, and working together for larger community goals.

Raffle tickets are \$5 and will be sold at UNLWC meetings and directly from Priscilla Henkelmann. The quilt will be on display several times throughout the year.

The more raffle tickets sold, the more money raised for scholarships and someone will end up with a beautiful quilt! Anyone can buy raffle tickets; the winner does not have to be a UNLWC member or present at the spring luncheon to win. Tickets would make nice gifts for garden and/or quilt lovers and also for supporters of UNL student scholarships.

Meet our 2023-24 Board Members

- President: Cheryl Trzupek
- President-Elect: Nancy Weller
- Second VP/Newcomers: Arlene Smith
- Third VP/Membership: Joyce Besch
- Recording Secretary: Pat Hurley
- Co-Treasurers: Cindy Conn and Linda Collins

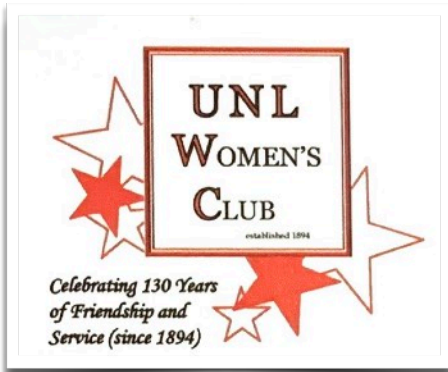


Officers Nancy Weller, Arlene Smith, Cheryl Trzupek, Linda Collins, Marilynn Schnepf, Cindy Conn (covered) and Pat Hurley attended the Spring Luncheon.

UNLWC 2023-24 Committee Chairs

Advisor / Parliamentarian	Marilynn Schnepf
Courtesy	Diane Mohrhoff
Fall Tour	Julie Albrecht, Cheryl Alberts, and Cathi Haisch
Fall Brunch	Jane Zatechka, Carol Rundquist, and Lois Mayo
Fundraising	Priscilla Henkelmann
Historian	Brenda Keith
Hospitality	Diane McCallister
Interest Groups	Penny McCord
Newsletter	Jill Bates
Programs	Marjorie Kostelnik and Jill Bates
Publicity / Communications	Ivette Bender
Scholarship	Charlotte Frank, Tina Shrader, and Debby Portnoy
Spring Luncheon	Karen Buckley and Luming Brewer
Telephone	Gail O'Hanlon
Webmaster	Kelly Powell
Holiday of Trees	Kelly Powell
Husker Pantry	Tina Shrader

Scholarship Donations



This is our 130th anniversary year!

Please consider an anniversary donation of \$130 or more to help celebrate the occasion. All donations are fully tax deductible and are managed by the University of Nebraska Foundation. Donations are used exclusively for scholarships to students in all majors.

Thank you so much for your past generosity to our scholarship fund. It makes a big difference every year for student recipients.

Spring Luncheon 2023-2024 Scholarship Recipients and UNLWC Committee Members



Ella Masso: Wow, what an honor! Please send my gratitude to the UNLWC Scholarship Committee for giving me this incredible opportunity! I am truly thankful.

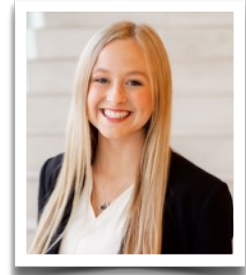
2024-2025 Scholarship Awardees

Student	Major
Emma Cavalier	Sociology & Communications
Mason Hardin	Chemistry
Allison Kassing	Human Development and Family Sciences & Spanish
Kara Kniep	Fisheries and Wildlife
Cooper Koch	Agricultural Economics
Madison Kreifels	Agricultural and Environmental Sciences Communications
Ella Masso	Advertising & Public Relations
Amanda Oliver	Biological Sciences
Madison Stracke	Agricultural Education
Lauren Sturgell	Microbiology
Kelly VandenBos	Psychology & Biological Sciences
Kaleigh Zollman	Advertising & Public Relations
Student Thirteen	Prefers to withhold name and info



Mason Hardin writes: "It was a blessing to receive your email this morning and I was excited to read about your group. I look forward to attending the luncheon next spring. This was wonderful news to hear during a lengthy medical school application process. I am grateful for the opportunities you have provided me with this support."

A "snail mail" thank you: "It's hard to express the amount of gratitude I have for being chosen for your scholarship. As I head into my senior year at UNL, my big goal is to set myself up so that I can run my business, InfoFilm, full-time after graduating in May. With InfoFilm, I share the stories behind agriculture producer operations through videography. With your investment, I am able to soak up all the opportunities UNL has to offer to help propel me toward this goal. Thank you so much! I hope you all realize how much this is impacting me! With gratitude, **Madison Kreifels**



Madison Stracke: Thank you for this generous scholarship! I am honored and delighted to receive this opportunity.

UNL Women’s Club Interest Groups

Interest groups are the essence of the UNL Women’s Club where our mission statement comes alive. These small groups are where acquaintances develop into friendships, common interests grow into strong bonds, and our desire to serve the University turns into action. Sign up at the Fall Welcome Luncheon or contact the Interest Group Chair listed. If you have a new idea or are willing to help organize a new group, such as wine tasting, bunco, or some other new group, contact Penny McCord.

Interest Group	When They Meet	Chair(s)
Book Clubs	For all who enjoy reading & discussing books with friends. Current clubs are closed. Contact Penny McCord if you would like to join a book club.	
-Book Club I - 1st Wednesday	9:30 a.m. No meeting in July	Judy Jensen
-Book Club II - 1st Tuesday	9:30 a.m. No meeting in July or August	Deb Miller Chris Wilhelm
-Book Club III - 3rd Friday	10 a.m. No meeting in July	Julie Albrecht
Bridge Groups	Meet monthly for bridge & friendship. Most are open for substitute members.	
-1st Thursday Bridge	Monthly except July 11:30 lunch at Olive Garden play at 12:30	Janice Lawrence Bonnie Varvel
-3rd Monday Bridge	September - May 9:30 at the Preserve optional lunch at 12:30	Kay Rockwell
-Bridge Marathon	October - April	Kay Rockwell
Newcomers & Friends - New members + others who wish to participate in coffee & conversation.	Monthly - Wednesdays at 9:30 am. Location varies	Arlene Smith
Variety Club - Join in different activities (movies, lunch, discussion, volunteering, performances, etc.)	Monthly - times and dates vary	Karen Buckley Chris Wilhelm;
Piecemakers - Quilting group, beginners welcome. Non-quilters welcome to bring other needle-work projects	Monthly - Tuesday at 9:30 am-noon. September to July. Location varies.	Jeanne Foster
Arts & Crafts- Members participate in craft projects or visit local arts/crafts exhibits.	Monthly. Dates & times vary.	Kem To Cheryl Alberts
Mahjong – Beginners welcome with others who like to play mahjong	Monthly – Time and location TBD	Judy Diamond
Culinary Arts – Themed luncheons with a hostess. Members bring a dish and provide their recipe via email.	Monthly - 3rd Thursday at 11:30.	Arlene Smith

Interest Group	When They Meet	Chair(s)
Ballroom Dance Club – Social dancing opportunities in the Lincoln area.	Locations and times vary by each dance opportunity	Janice Lawrence can answer questions.
Group Therapy (aka Ladies Night Out) - Dinner out at various local eateries or hosted pot luck dinners.	August - May Usually third week of the month.	Miriam McCornick; Kelly Powell
Gourmet Dining - Fun and food-loving group that creates assigned dishes to share at unforgettable meals at hosts' homes.	September - May	Laura Damuth
Nooners – Members meet for lunch or dinner out & sign up to choose a restaurant, time, and make reservations.	October - May 2 nd Thursday, at 4:30	Cathi Haisch
International Club - Programs with guest speakers or lunch outings to learn about other countries & cultures.	October – May Dates & times vary.	Kay Rockwell; Pat Hurley Sarah Purcell Cheryl Trzupke Kathy Phillips
Husker Pantry - Supports UNL students through donations of food, personal care items, paper products, and cleaning supplies to the Husker Pantry	Collections at various times throughout the year	Tina Shrader
Meals on Wheels - Delivers hot meals to the elderly & disabled. Tabitha trains & schedules workers.	Flexible. Does not require a weekly or monthly commitment.	Chris Read can provide a ride along if interested.
Contact Penny McCord if you would like to suggest a new interest group.		



Newcomers and Friends meet for coffee every Wednesday morning at 9:30. The locations vary, sometime depending on the weather. During the summer, you may find the group at Holmes Lake with their folding chairs and favorite beverages by the children's playground. They also meet at various local coffee houses. Please know that everyone is invited! The conversation is lively, and you are always welcome with open arms.

Membership Dues

Membership renewal forms will be mailed along with a fundraising letter again this year. Please watch for this mailing in mid-August. Your dues are payable by September 30th. Dues are \$25 before September 30 and \$30 after that date.



Photo by Malvestida on Unsplash

Courtesy

Cards are sent to members who are hospitalized or for special events such as a significant birthday or anniversary.

If you know of a member who has passed away, please advise our Courtesy Chair Diane Mohrhoff.



Photo by Lina Trochez on Unsplash

From the Husker Pantry website:

Every Husker deserves to eat and feel secure.

Nearly 1 in 3 Husker students worries about not having enough food until they get money to buy more. The Husker Pantry helps address students' food insecurities in a friendly and welcoming space.

In Memory

In memory of a member who has passed away, a card is sent to the family expressing our sympathy. It also states that each year a memorial donation of \$300 is made to the NU Foundation UNLWC Scholarship Fund in honor of all those who have passed away. This donation from UNL Women's Club is sent in April along with a letter listing the individuals in whose name the gift is made.



Photo by Alexander Grey on Unsplash

The names of members who were recognized by the club with a monetary donation to the Foundation are:

Joanna Rice
Jane Clegg

Husker Pantry

Our Back-to-School Husker Pantry donation opportunity will take place on Wednesday, August 28 from 9:30 to 11 a.m. during Newcomers and Friends at Holmes Lake Park. Make a morning of it by bringing your donation, a chair, and a beverage so you can visit with old friends or meet new members.

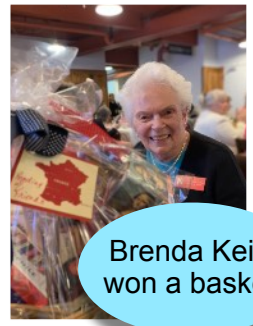
Personal care products are in most demand, but any and all donations are greatly appreciated. If you'd rather let the Husker Pantry shop to fill their needs, checks can be made payable to the NU Foundation.

We look forward to seeing you at Holmes Lake!



UNLWC Snapshots

Spring Luncheon - Springtime in Paris

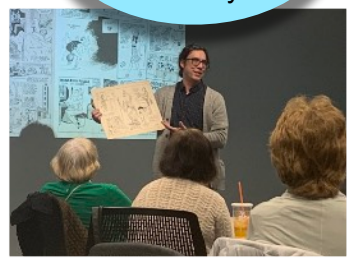
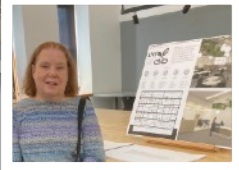


Brenda Keith won a basket!

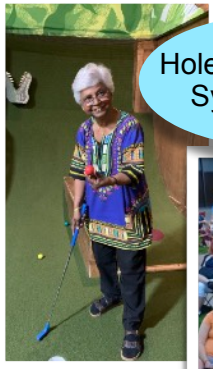


Winter Programs - Humor & Laughter and Oz Black Comics as History

Arts & Crafts - Architectural Hall Tour and Kem F. To displays her creation



Book Club - Nancy Weller as a character from Lessons in Chemistry



Hole-in-one expert Sylvana Airan



Newcomers at MoJava and the Lux Center

Interest Group Chair Luncheon



Variety Club - Miniature Golf and Jazz in June

